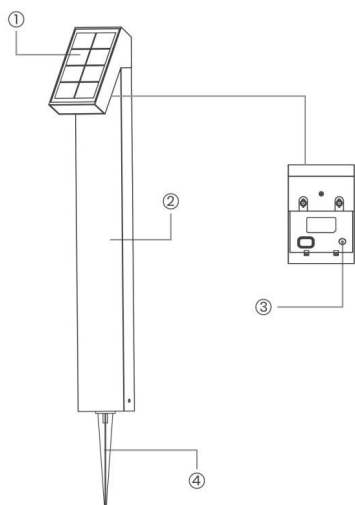




Main Parts



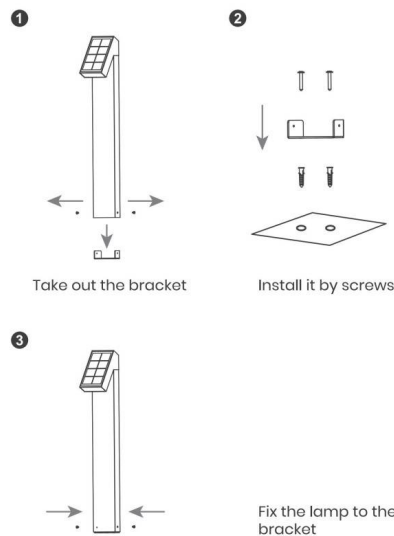
- ① Solar Panel
- ② Lamp Body
- ③ Switch Button
- ④ Stake

Characteristics

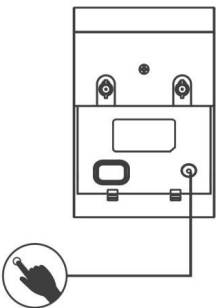
Battery: Li-ion Battery  
Solar panel: Monocrystalline silicon  
Materials: ABS+Aluminium Alloy

How to install the device?

Expansion Screw Install



Working process instructions



Switch Button

- 1. Switch on and off: long press for 1.5S
- 2. Short press to change the lighting mode

Lighting Mode

- M1: 25% till dawn
- M2: 50% till dawn
- M3: 75% till dawn
- M4: 100% till dawn

Ground Staking

